

SEQCA Community Planning Forum

15 October 2022

Protecting the Planet from your Backyard

Learnings from the Oxley Creek Transformation Project



BRISBANE
Sustainability
AGENCY

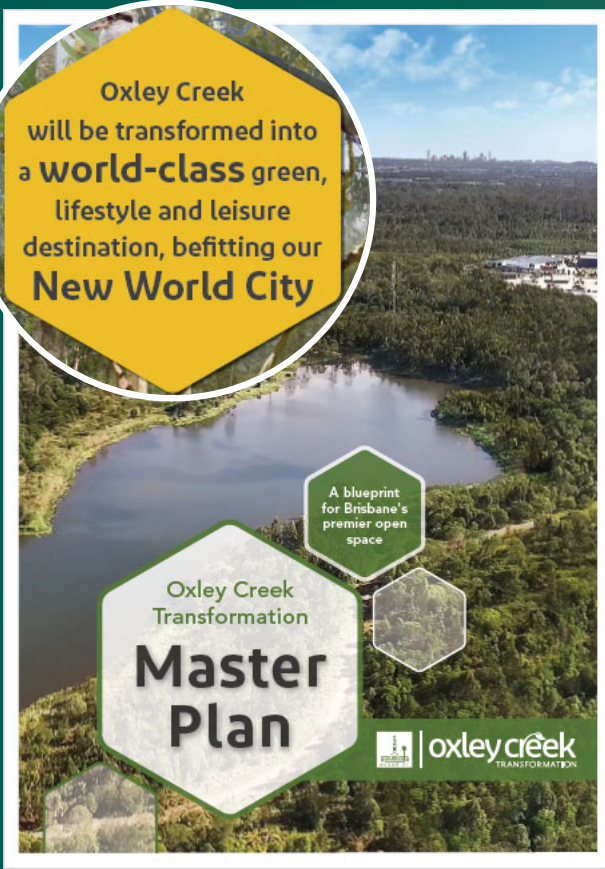
Security Classification : For Official Use Only

Brisbane Sustainability Agency acknowledges and pays respect to the Traditional Custodians of the land associated with the Oxley Creek Transformation project, the Turrbal and Yuggera people, their Elders past, present and emerging.



BRISBANE
Sustainability
AGENCY

Oxley Creek Transformation Project



Environment

Champion environmental protection, enhancement and resilience, inspire environmental conservation and demonstrate leadership in sustainability.

Social/Community

Capture social and community benefits by activating existing spaces and creating new places for people to gather, relax, play and connect with others and nature.

Economic

Inspire sustainable economic uplift, establish partnerships and attract business interest and investment to fund activation and ongoing environmental revitalisation to boost the local economy.



Strategic Corridor Restoration Plan



Social value



Wildlife and habitat



Erosion and sediment



Vegetation cover



Water quality



Groundwater availability



Riparian vegetation corridor



Hydrology



Aquatic life and habitat

Regenerate Oxley Creek into a biodiverse ecological corridor for the city.



BRISBANE
Sustainability
AGENCY

Vegetation, Fauna Corridors, Habitat – Oxley Creek




DISCOVERY TRAIL STOP

10

Who's home?



The Nest


The large circular structure at the entry to Warril Parkland is called 'The Nest'. The different sized timber boxes contained within *The Nest* provide a temporary home for a range of different animals.



Animals move homes regularly, which helps keep their nesting spot clean and free of parasites and disease. It also helps them avoid predators, who quickly learn which nesting spots are in use.

How many nesting boxes can you spot in *The Nest*?
 What types of animals might live here?
 How might different types of animals get to the boxes?



oxley creek

TRANSFORMATION

www.oxleycreek.com.au

[f](#) [t](#) [@](#) #ouroxleycreek



BRISBANE
Sustainability
AGENCY

Vegetation, Fauna Corridors, Habitat – Community & At Home



BRISBANE
Sustainability
AGENCY

Rubbish and Pollutants – Oxley Creek



BRISBANE
Sustainability
AGENCY

Security Classification : For Official Use Only

Oxley Creek Clean Up Event

October 2021 - in just 4 hours we found:

1600+

Plastic packets
& plastic bags

42

Balloons/
Ribbons

80kg

Metal

290

Aluminum Cans

91

Face Masks

83

Paper Cups
(Coffee / Slurpee)

1528

Polystyrene Items

50

Tyres

3

Bikes



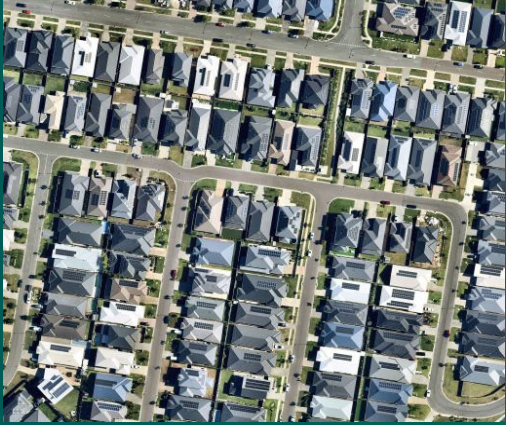
BRISBANE
Sustainability
AGENCY

Rubbish and Pollutants – Community & At Home



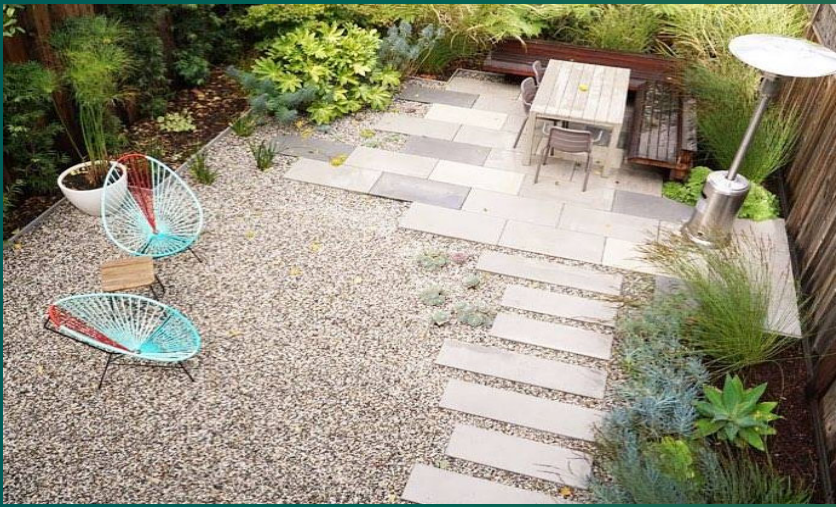
BRISBANE
Sustainability
AGENCY

Stormwater and Erosion – Oxley Creek



BRISBANE
Sustainability
AGENCY

Stormwater and Erosion – Community & At Home



BRISBANE
Sustainability
AGENCY

Thank you and see you at Oxley Creek...



Visit our latest destination Archerfield Wetlands Discovery Trail



BRISBANE
Sustainability
AGENCY

Security Classification : For Official Use Only

And one final thing...



Oxley Creek corridor

Have your say

BRISBANE Sustainability AGENCY

Win a voucher to the Rocklea Markets!

The advertisement features a photograph of a person riding a bicycle on a gravel path through a natural area. In the foreground, there is a wooden signpost with a map. The background shows a line of trees under a clear blue sky. The text is overlaid on the top and bottom of the image.

Gaining an understanding of how the Brisbane community currently use and value the waterways and surrounding open spaces of Oxley Creek.



BRISBANE
Sustainability
AGENCY