



Planning for the community: Issues, opportunities and solutions

Martin Reason


Executive Director – Regional & Spatial Planning

Qld Department of State Development, Infrastructure, Local Government & Planning

I acknowledge Turrbal and Jagera people, their culture, history and diversity, and their deep connection to the lands and waters of this region.



The SEQ Regional Plan
How Are We Tracking?
What's Next?

A young girl with blonde hair in a ponytail, wearing a white sleeveless top and a pink tutu, stands on a sandy beach looking out at the ocean. The waves are breaking on the shore, and the scene is captured in a soft, natural light.

“Cities have the capability of providing something for everybody only because, and only when, they are created by everybody”.

Jane Jacobs

A young girl with her hair in a ponytail, wearing a white short-sleeved top and a pink tutu, stands on a sandy beach looking out at the ocean. The waves are breaking on the shore, and the scene is captured in a soft, natural light.

Housing choice, diversity & equity

Resilience and energy transition

Biodiversity, environment & landscape



Water, food & energy security

Great streets & places

Great public realm & character

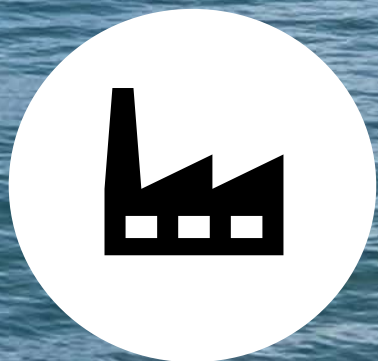
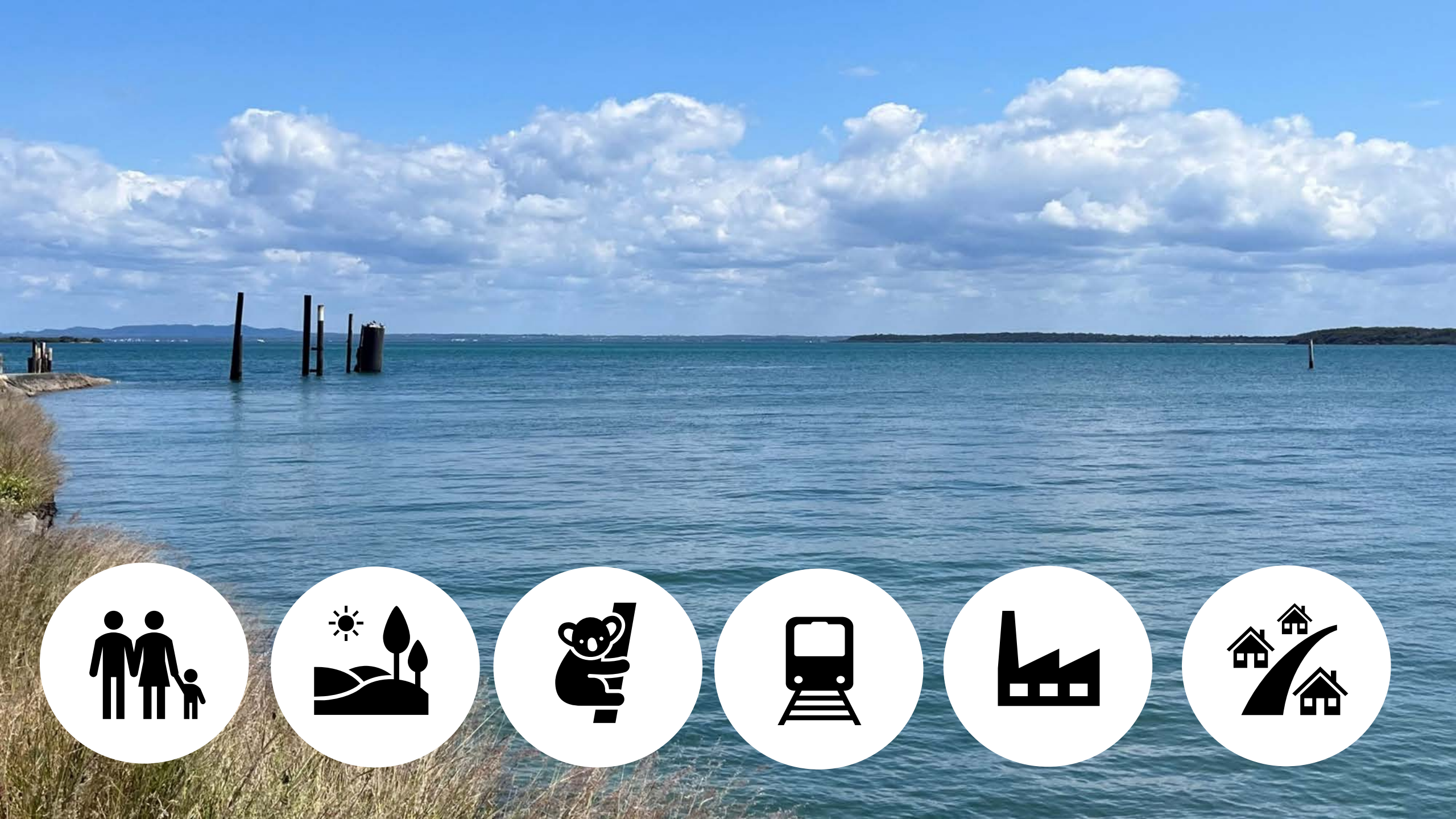
South East Queensland Regional Plan

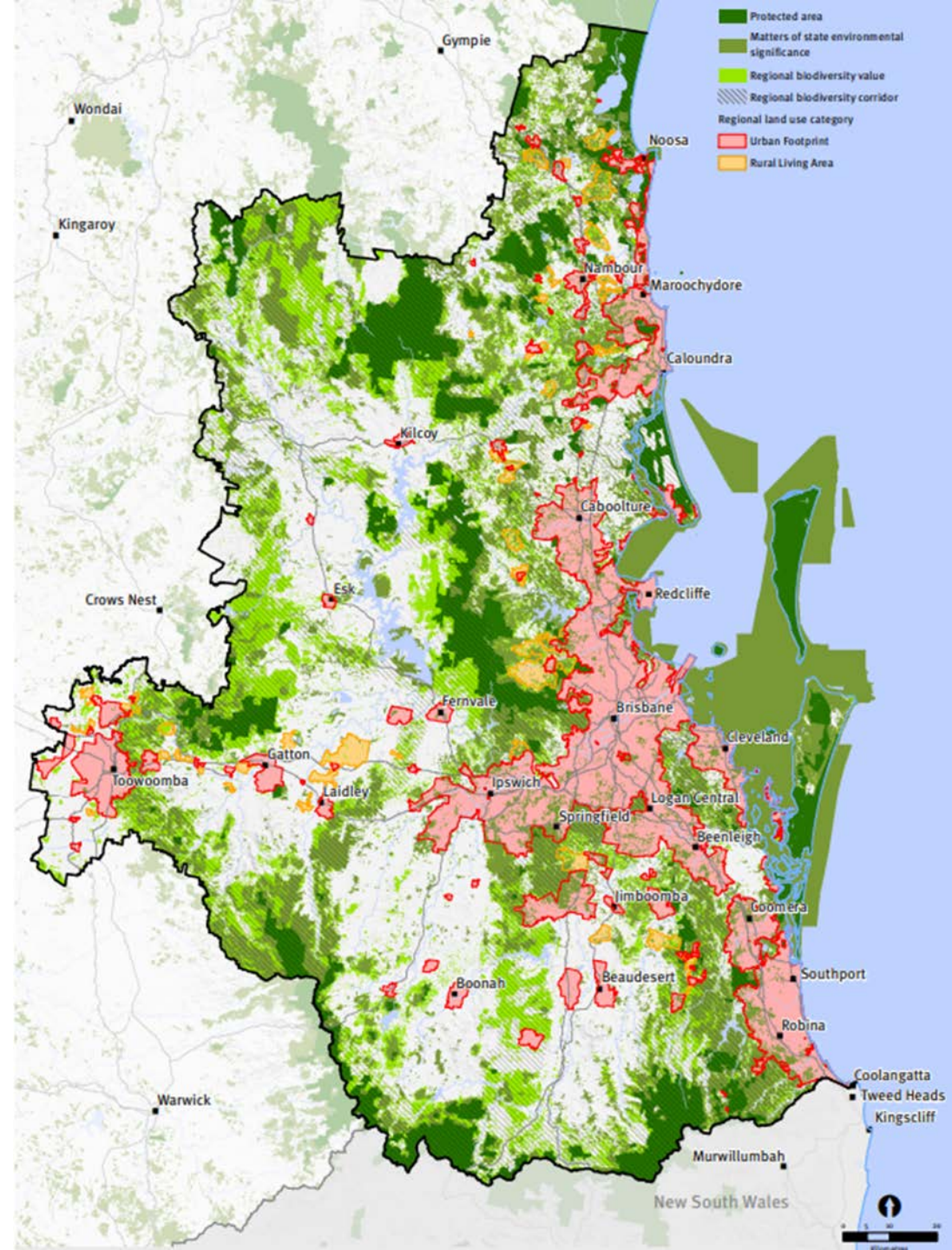
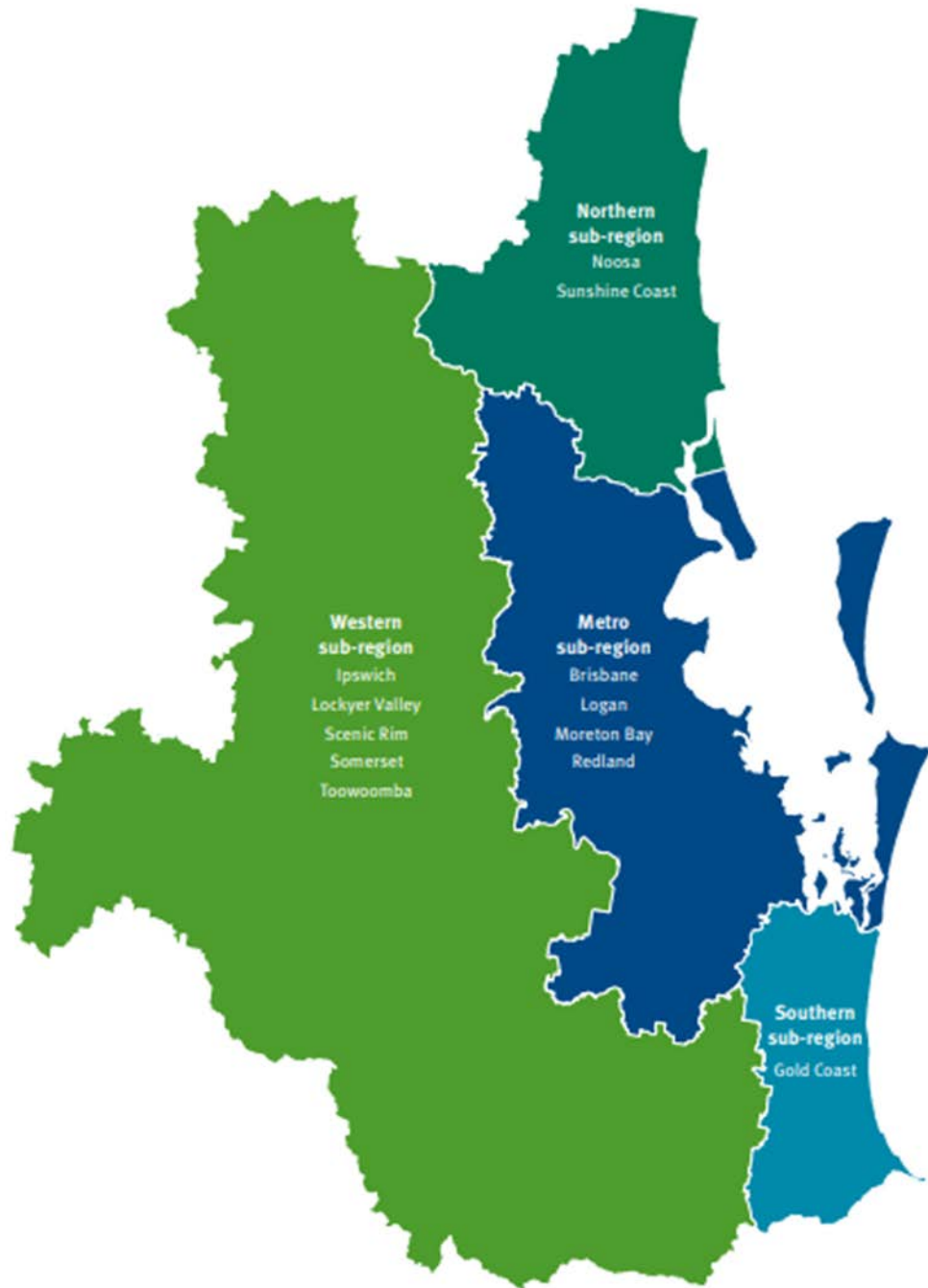


Lady Cilento
Children's
Hospital

- ↙ Hospital Car Park
- 🅑 Main Entrance
- 🅑 Hancock St Car Park
- 🚚 Loading Dock
- Centre For Children's Health Research

Queensland
Government







www.planning.statedevelopment.qld.gov.au

[Home](#) > [Planning framework](#) > [Plan-making](#) > [Regional planning](#) > [South East Queensland regional plan](#)

Planning framework

- > [Legislation](#)
- > [Plan-making](#)
- > [What is plan-making?](#)
- > [State planning](#)

South East Queensland regional plan

The [South East Queensland Regional Plan 2017](#), also known as *ShapingSEQ*, is the regional plan for the South East Queensland (SEQ) region.

The [growth monitoring program](#) supports *ShapingSEQ* through its housing supply expert panel, measures that matter report and the land supply and development monitoring online report.

How Are We Tracking?





A wide-angle photograph of a lush, golden wheat field. The wheat stalks are tall and full, with their heads clearly visible. The field stretches far into the distance, meeting a range of dark, forested mountains under a sky filled with soft, grey clouds. The lighting is natural, suggesting late afternoon or early morning, with a warm, golden glow over the scene.

What's Next?



SOUTH EAST QUEENSLAND

SEQ CITY DEAL



SEQCityDeal



Accelerating future jobs across SEQ

- 1. Support the shift to an innovative and knowledge-intensive region, enabled by world-class digital connectivity.
- 2. Seek opportunities to build high-value employment in advanced manufacturing, agribusiness, transport, logistics and innovation sectors.
- 3. Enable SEQ to become a more export-competitive region.



A faster, more connected SEQ region

- 1. Enable greater and faster mobility for people and goods throughout the region by making new investments in transport systems and connections.
- 2. Support the region's economic development with an integrated transport system that accommodates future growth, reduces congestion, and enhances productivity.



A more liveable SEQ

- 1. Deliver a healthy, sustainable and liveable region through new investments in urban amenities, blue and green environmental assets, and transitioning to a circular economy.
- 2. Enhance the region's natural environment to support its sustainability and liveability.



Create thriving communities for SEQ

- 1. Unlock new economic development corridors for trade and enterprise by leveraging employment and investment opportunities in fast growing subregions.
- 2. Enhance prosperity in SEQ through improved housing choice, more affordable living options, better access to jobs and improved coordination of services.



QUEENSLAND ENERGY AND JOBS PLAN

Power for generations

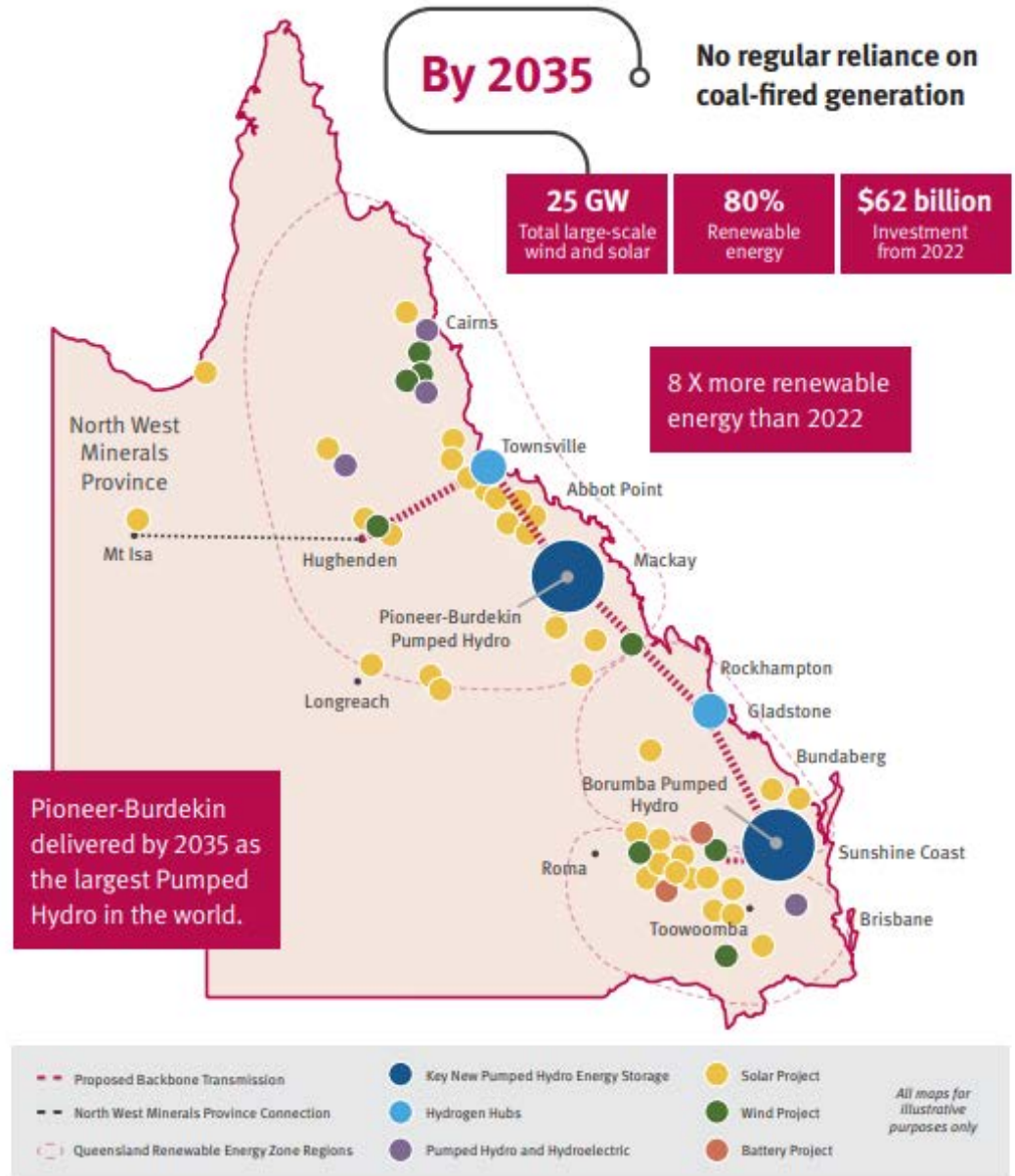
70%
Renewable Energy
by 2032



Cleaner Affordable Energy
For Everyone

100,000 jobs

September 2022



STRATEGIC PRIORITY 3

Building economic opportunity

Building economic opportunity will stimulate investment and market development in the waste management and resource recovery sector and support economic and jobs growth.

Outcomes

Building and facilitating economic opportunities for the waste management and resource recovery sector will help achieve the following outcomes.

- Growth in the economic value of the waste management and resource recovery sector.
- Increased number of jobs in reuse, recycling and recovery.
- Clear and transparent waste and resource recovery infrastructure planning framework.
- Stimulated markets for new and innovative products containing recycled content and demand for recycled materials.



STRATEGIC PRIORITY 1

Reducing the impact of waste on the environment

A healthy environment creates safe and healthy communities, supports our economy and contributes to our general health and well-being. Which is why it is so important that we protect it for future generations.

Future waste management solutions that increase resource recovery and divert waste from landfill will reduce the impact on Queensland's environment and deliver better outcomes for local communities.

Outcomes

Reducing the impacts caused by waste on the environment will help achieve the following outcomes.

- Reduction in the amount of waste that goes to landfill, is littered or illegally dumped.
- Reduction in waste-related greenhouse gas emissions.
- Reduction in the long-distance transport of waste.
- Protection of Queenslanders' lifestyles and the enjoyment of our natural environment.
- Savings for households from avoiding unnecessary waste.
- Reduction in the impact on neighbouring communities and amenity value from waste facilities.



STRATEGIC PRIORITY 2

Transitioning to a circular economy for waste

The transition to a circular economy will support higher recycling and recovery rates in Queensland, driven by world-class industry and technological advances.

Outcomes

Transitioning to a circular economy model for the waste management and resource recovery sector will help achieve the following outcomes.

- Management of waste as a valuable resource.
- Improved data and information sharing on material flows across Queensland.
- Clear standards and guidelines for reuse, recycling and recovery.
- A clear position and policy on the role of fuels and energy from waste in Queensland.



Waste Management & Recovery



Disaster Resilience and adaptation



QUT

Places, spaces, parks



A scenic view of a body of water under a cloudy sky. In the foreground, a wooden dock extends from the bottom left, with three kayakers resting on it: a yellow one, a pink one, and a long orange one. To the left, a white motorboat with the text 'WKE470 THE MAGNUM' is docked. The water is calm with some ripples, and a small boat is visible in the distance. The background shows a line of trees and a bright sky with scattered clouds.

Thank You!